



# THE WESTMINSTER

## 4 BEDROOM DETACHED HOUSE

The Westminster is a four bedroom family home with enviable modern living space and double garage.

This attractive home provides spacious accommodation for all the family with, a welcoming entrance hall leading to a light and airy lounge featuring bay window and further benefits from a gas fire. A well equipped kitchen with integrated appliances looks stunning and also offers a breakfast room for informal dining. A utility room adds convenient space for laundry. The dining room offers French doors opening onto a patio area for outside entertaining.

Upstairs comprises four double bedrooms, the master having a spacious en-suite shower room with designer fitted bathroom furniture and full wall tiling. The family bathroom with bath and separate shower cubicle again features fitted furniture, full wall tiling and heated towel rail. The Westminster benefits from a double garage with electric door, block paved driveway and turf to front garden.

HOMES OF QUALITY & STYLE

*Get in touch*

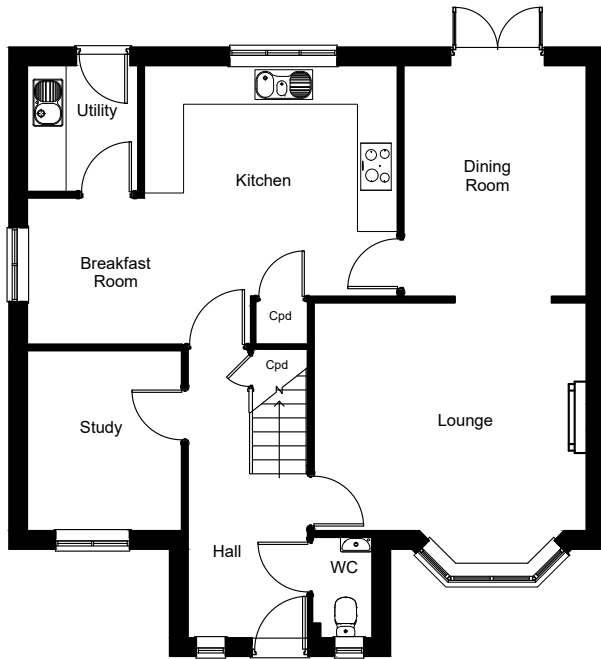
Head Office: 01522 512200  
Email: [info@taylorlindseyhomes.co.uk](mailto:info@taylorlindseyhomes.co.uk)  
[www.taylorlindseyhomes.co.uk](http://www.taylorlindseyhomes.co.uk)

### *Features include:*

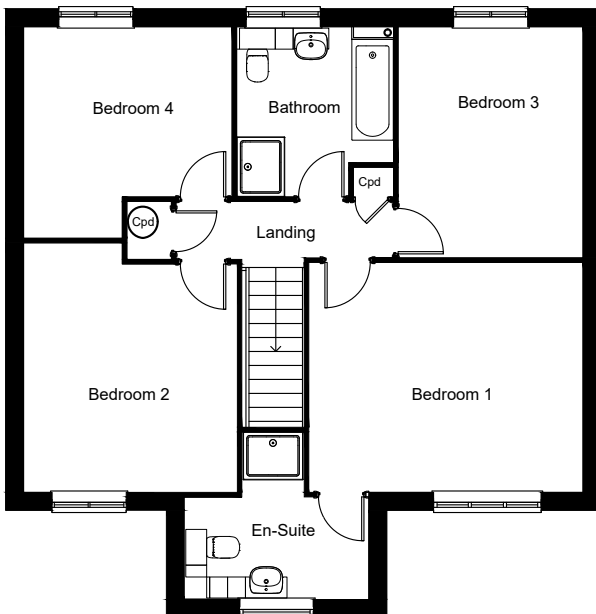
- Kitchen including Double Oven, Microwave, Induction Hob and Extractor, Integrated Fridge Freezer, Dishwasher and Wine Cooler,
- Porcelanosa Tiling to Bathroom and En-suite Walls, Kitchen, Cloakroom and Hallway Floor
- Rain Shower to En-suite and Luxury Fitted Bathroom Furniture
- Double Garage with Electric Door, Block Paved Driveway
- Grade A Condensing Boiler
- Breakfast Room, Utility and separate Dining Room
- Downstairs Study
- Gas Fire and Surround
- PVCu Windows and Doors to Secure By Design Standard



## GROUND FLOOR



## FIRST FLOOR



HOMES OF QUALITY & STYLE

Get in touch

Head Office: 01522 512200  
 Email: [info@taylorlindseyhomes.co.uk](mailto:info@taylorlindseyhomes.co.uk)  
[www.taylorlindseyhomes.co.uk](http://www.taylorlindseyhomes.co.uk)

# THE WESTMINSTER

4 Bedroom Detached | Double Garage  
 Kitchen | Dining | Utility | Breakfast Room  
 Lounge | Entrance Hall | Study  
 Bathroom | Master En-suite

### Ground Floor

Lounge	14'11" x 14'6"	4.54m x 4.41m
Dining Room	12'7" x 9'11"	3.84m x 3.03m
Study	9'10" x 8'4"	2.99m x 2.55m
Kitchen	13'10" x 12'7"	4.21m x 3.84m
Breakfast Room	8'7" x 7'11"	2.63m x 2.42m
Utility	6'10" x 5'11"	2.08m x 1.82m

### First Floor

Bedroom 1	15'1" x 12'7"	4.59m x 3.84m
En-suite	10'0" x 5'7"	3.05m x 1.70m
Bedroom 2	13'8" x 11'8"	4.17m x 3.57m
Bedroom 3	12'8" x 10'1"	3.86m x 3.09m
Bedroom 4	11'7" x 11'5"	3.53m x 3.48m
Bathroom	9'4" x 8'8"	2.84m x 2.64m

*Illustrations and plans are indicative and for guidance only. Architectural details, materials and colours will change from plot to plot. Design changes may be made without prior notice. All dimensions shown on this brochure are approximate and intended for guidance only.*

